

**CODE ANALYSIS:**

Applicable Code Reference:  
 1991 Standard Building Code  
 1991 NFPA 101: Life Safety Code

Building Type: Automotive Service Station  
 (w/out gas pumps)

Occupancy Classification: Business Group 'B'  
 Classif. of Hazard of Contents: Ordinary Hazard, Group 3  
 Gross Building Area: 1st Floor: 5000 sf  
 2nd Floor: 678 sf

Construction Classification:  
 Table 400, SSB: UNPROTECTED / UNSPRINKLERED  
 Maximum area allowed = 9,000 s.f.  
 Maximum no. stories = 2  
 Maximum height = 40 ft.

Fire Protective Requirements: Table 600:  
 party & fire walls: 4 hrs.  
 interior brg.walls: 0 hrs.  
 columns: 0 hrs.  
 beams: 0 hrs.  
 floors: 0 hrs.  
 roof: 0 hrs.

exterior brg. & non-brg.walls:  
 0' to 3' to prop. line: 1 hrs. (0%)  
 over 3' to 10' to prop. line: 0 hrs. (20%)  
 over 10' to 20' to prop. line: 0 hrs. (40%)  
 over 20' to 30' to prop. line: 0 hrs. (60%)  
 over 30' to prop. line: 0 hrs. (NL)

Min. Fire Resist. of Walls, Partitions, and Opening  
 Protectives: Table 700: No Applicable Requirements

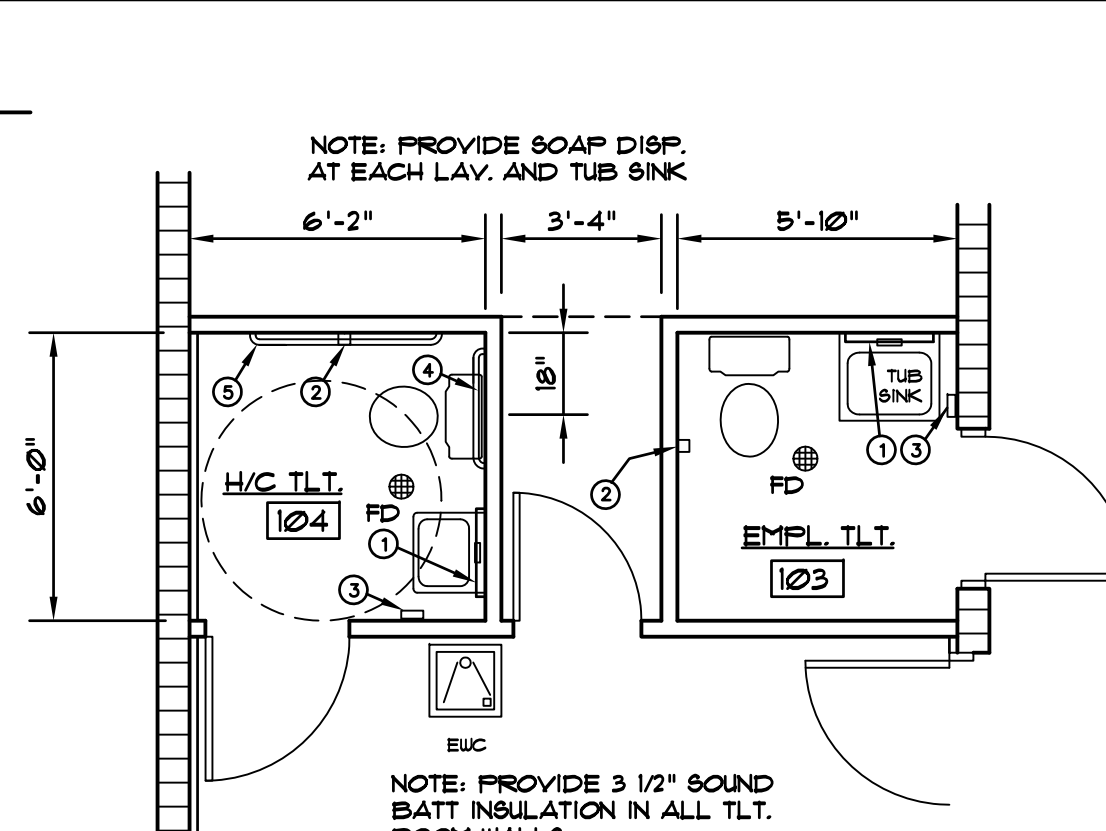
Finishes: (Unsprinklered criteria)  
 Exits: Class 'B'  
 Exit Access: Class 'B'  
 Other Spaces: Class 'C'

Sprinklers, Standpipes and Alarm Systems: Chapter 9:  
 Sprinkler System is not required per SSB or NFPA 101.  
 Standpipe System is not required.

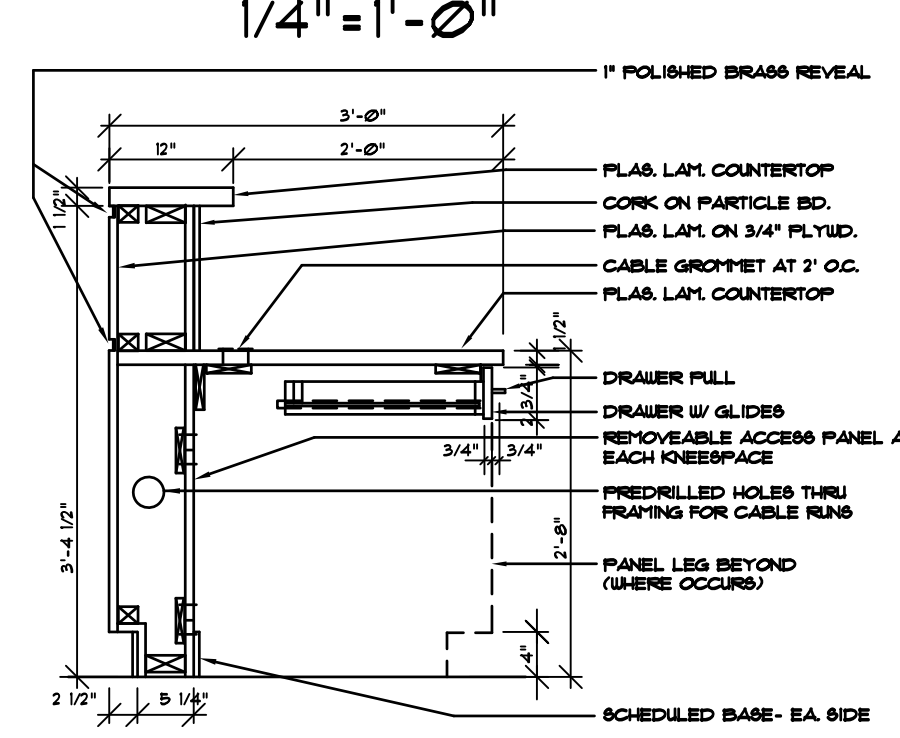
Manual Fire Alarm System is not required.  
 Firestopping and Draftstopping: Chapter 705:  
 Firestopping is required in all walls and partitions of ceilings and roofs in accordance with paragraph 1704.1.  
 Draftstopping is not required in metal-framed non-combustible construction.

Occupant Load Analysis: Chapter 11 SSB:  
 Business areas @ 100 s.f. / occupant:  
 830 sq ft / 100 = 8 people  
 Service areas @ 300 s.f. / occupant:  
 4848 sq ft / 300 = 16 people  
 Total Occupant Load = 24 people  
 Minimum number of exits: 2 required and 2 provided.  
 Egress width required:  
 First Flr: (level) = .2 x Occupant Load = .2 x 24 = 4.8 inches  
 Egress width provided: 72 inches

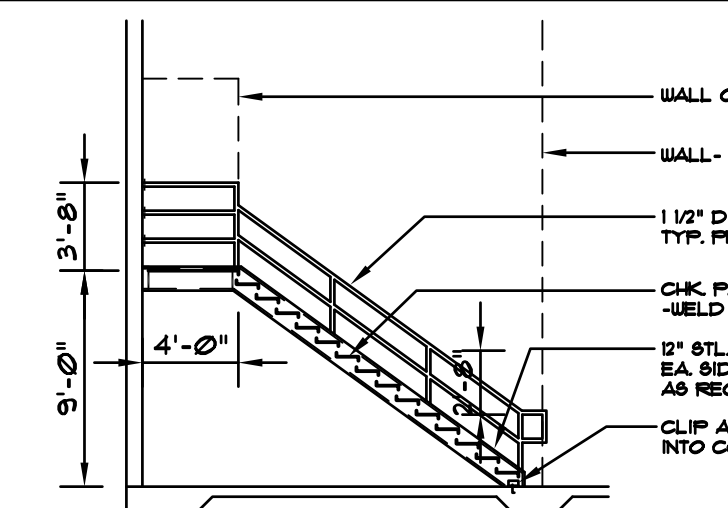
First Flr:  
 Maximum travel distance to an exit: does not exceed 200' (unsprinklered criteria)  
 Maximum dead end corridor: does not exceed 20'  
 Minimum corridor width: Required: 44"  
 Provided: 44"



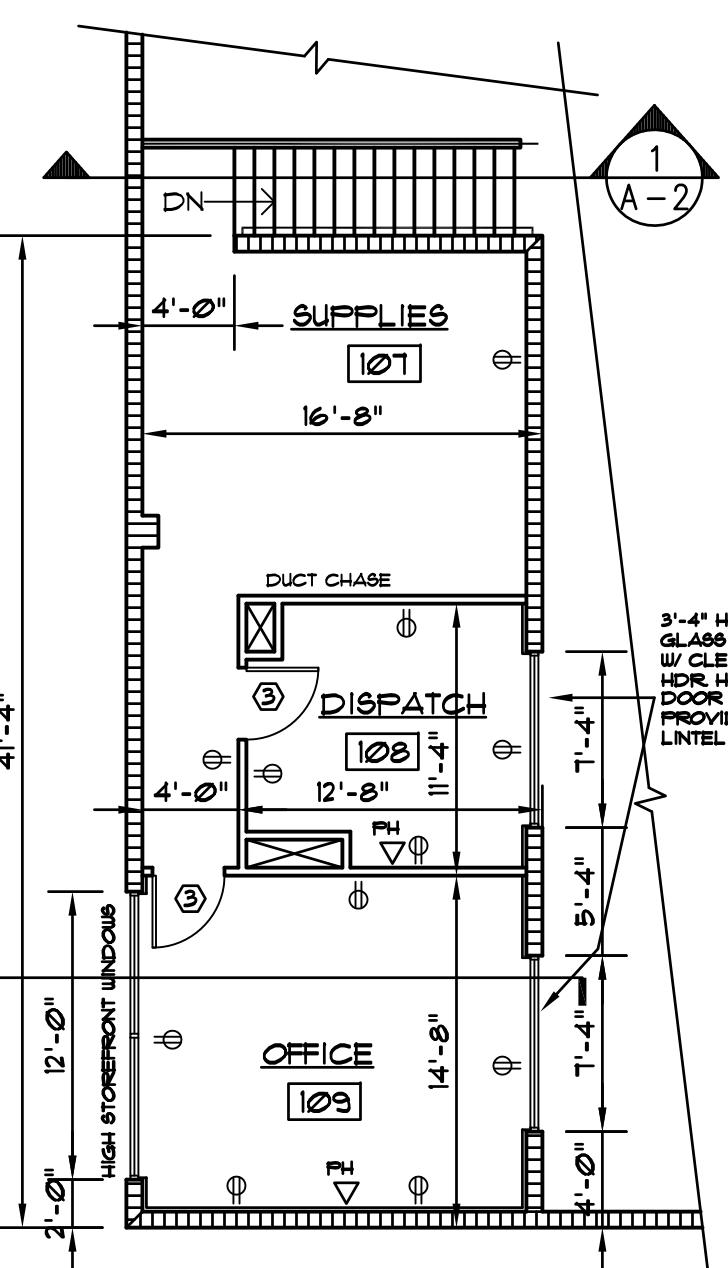
**ENLARGED TOILET FLOOR PLAN**  
 1/4" = 1'-0"



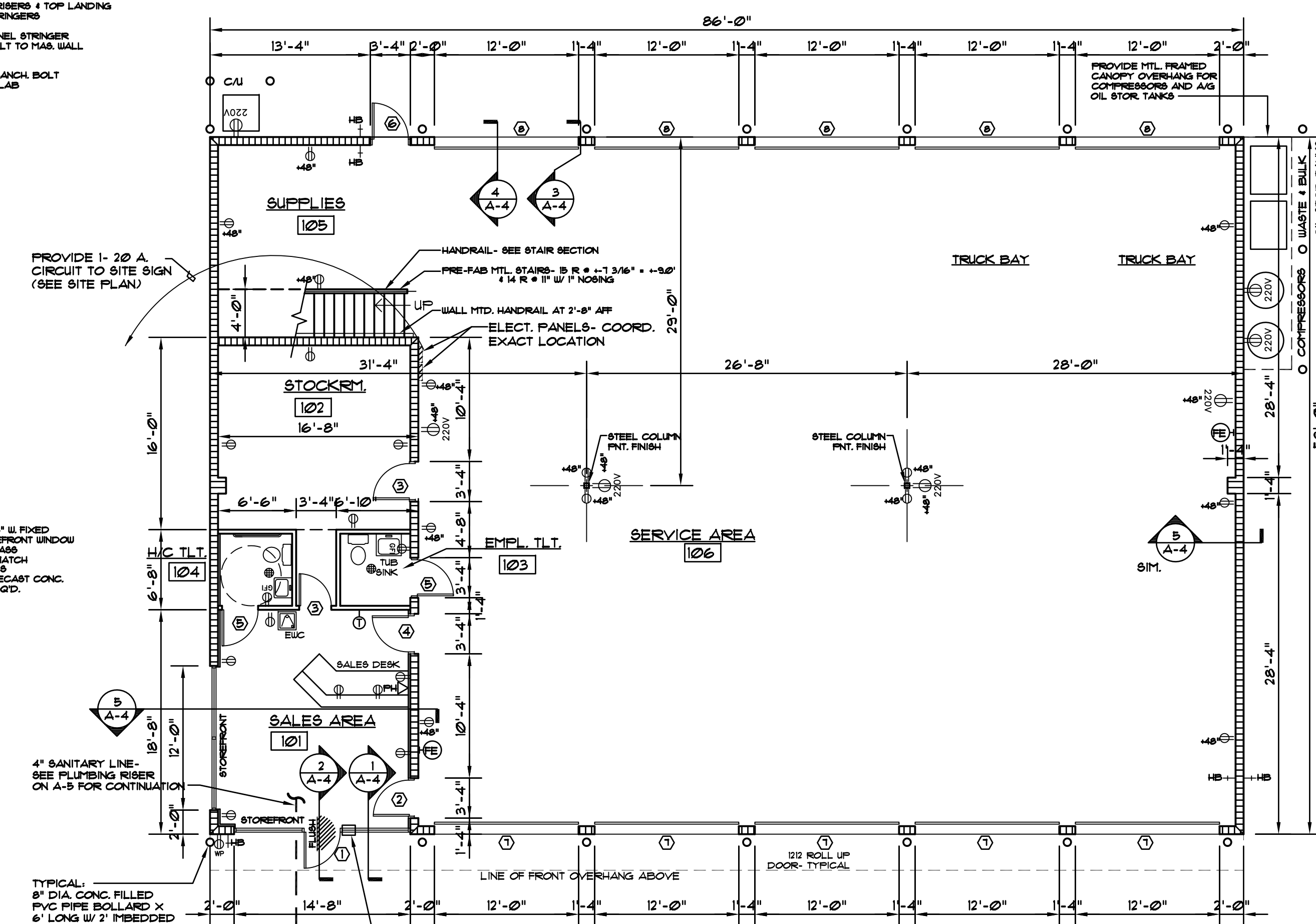
**SALES DESK CABINET SECTION**  
 N.T.S.



**STAIR SECTION**  
 1/4" = 1'-0"



**SECOND FLOOR PLAN**  
 1/8" = 1'-0"



**FLOOR PLAN**  
 1/8" = 1'-0"

**DOOR AND FRAME SCHEDULE**

DOOR	SIZE	THK.	TYPE	MATERIAL	FINISH	GL. TYPE	TYPE	FINISH	GL. TYPE	HEAD	JAMB	SILL	IHS.	DETAILS	RATING	SET	NOTES
1	13'-0"	7'-0"	1 3/4"	A	ALUM	F/F	GL-1	ALUM	F/F	GL-1	---	---	---	---	---	---	1 STRFRNT. DOOR & FR.
2	13'-0"	7'-0"	1 3/4"	B	SCWD	S/S	---	HM	PNT	---	---	---	---	---	---	---	1 STRFRNT. DOOR & FR.
3	13'-0"	7'-0"	1 3/4"	F	SCWD	S/S	GL-4	HM	PNT	---	---	---	---	---	---	---	1 4
4	13'-0"	7'-0"	1 3/4"	B	SCWD	S/S	---	HM	PNT	---	---	---	---	---	---	---	1 1
5	13'-0"	7'-0"	1 3/4"	B	SCWD	S/S	---	HM	PNT	---	---	---	---	---	---	---	1 1
6	13'-0"	7'-0"	1 3/4"	C	HM	PNT	---	---	---	---	---	---	---	---	---	---	1 2
7	112'-0"	12'-0"	2"	D	ALUM/STL	PNT	GL-1	STL	PNT	---	---	---	---	---	---	---	1 5
8	112'-0"	12'-0"	2"	E	ALUM/STL	PNT	---	STL	PNT	---	---	---	---	---	---	---	1 5

**ABBREVIATIONS:**

EXIST. = EXISTING  
 F/F = FACTORY FINISH ALUMINUM STOREFRONT (WHITE ALUM. FINISH)  
 PNT = PAINT FINISH  
 BF = BIFOLD DOOR  
 PR = PAIR OF DOORS  
 HM = HOLLOW METAL  
 SCWD = SOLID CORE WOOD DOOR  
 HCWD = HOLLOW CORE WOOD DOOR  
 S/S = SANDING SEALER (2-COATS)  
 ALUM. = ALUMINUM THRESHOLD

**HARDWARE SETS:**  
 SET #1: EA. DOOR TO HAVE: KEYED CYLINDER W/ THUMBTURN INSIDE OVERHEAD CLOSER PUSH BAR, FULL WIDTH PULL HANDLE BB BUTTS, 1.5 PR. ALUM. THRESHOLD - LOW PROFILE (PEMCO 270A) WEATHERSTRIPPING

SET #2: EA. DOOR TO HAVE: KEYED LOCKSET W/ THUMBTURN INSIDE CLOSER BB BUTTS, 1.5 PR. ALUM. THRESHOLD WEATHERSTRIPPING

SET #3: EA. DOOR TO HAVE: LOCKSET BUTTS, 1.5 PR. - SPRING CLOSING WALL STOP

SET #4: EA. DOOR TO HAVE: PRIVACY LOCKSET - LEVER HANDLE AT TLTS. PASSAGE SET - LEVER HANDLE AT DOOR TO SALES AREA LOCK SET - AT DOOR TO OFFICES BUTTS, 1.5 PR. (SPRING CLOSING AT TLTS. ONLY) FLOOR OR WALL STOP

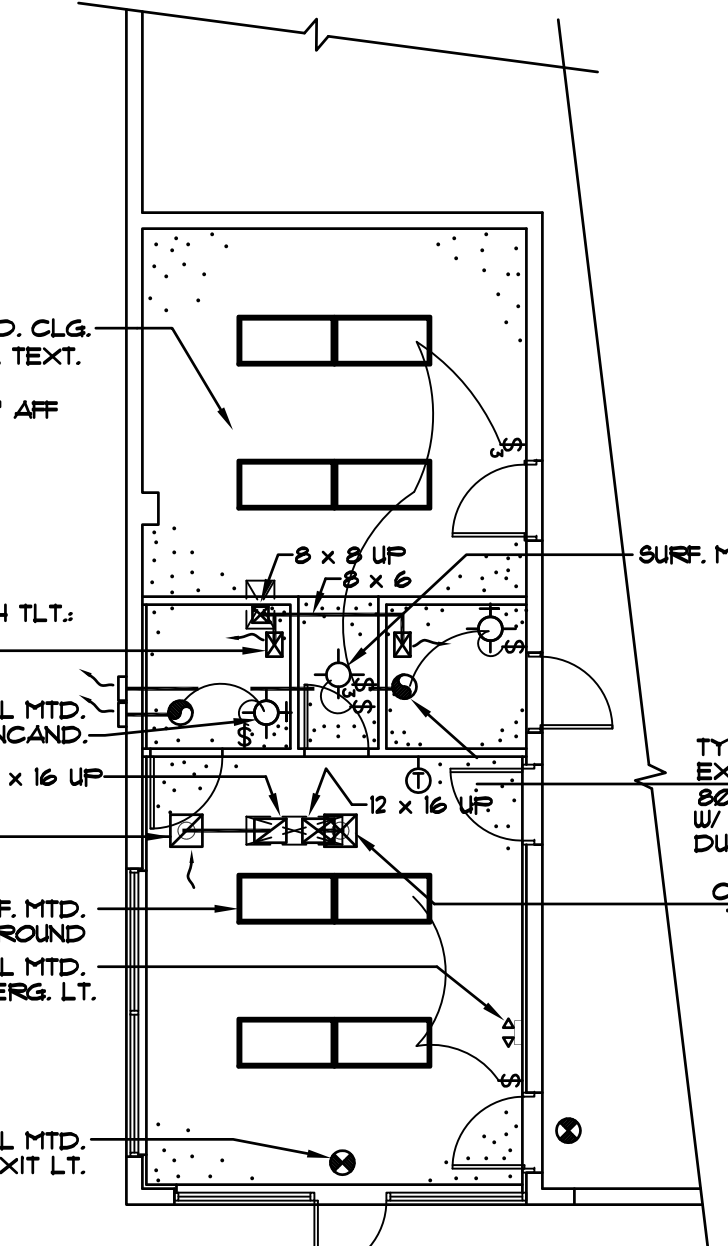
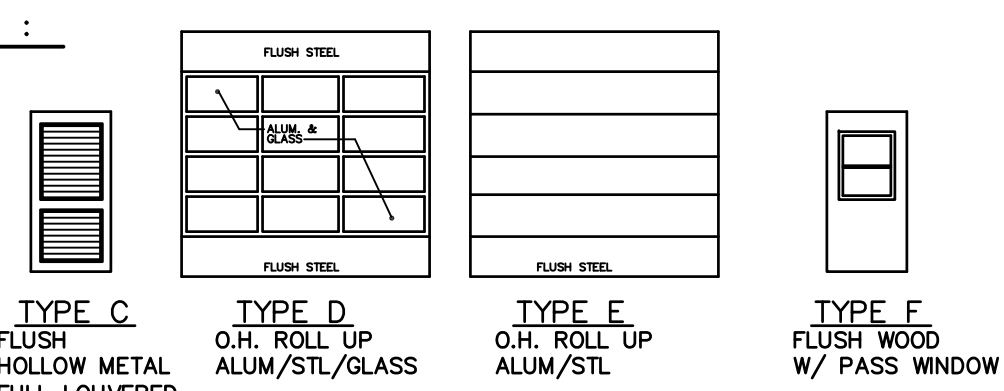
SET #5: EA. DOOR TO HAVE: MASTERKEYED PADLOCK

**GLASS TYPE:**  
 GL-1: 1/4" TEMPERED GLASS (SOLARBRONZE TINTED)  
 GL-2: 1/4" GLASS (SOLARBRONZE TINTED)  
 GL-3: 1/4" GLASS (CLEAR)  
 GL-4: TEMPERED GLASS (CLEAR)

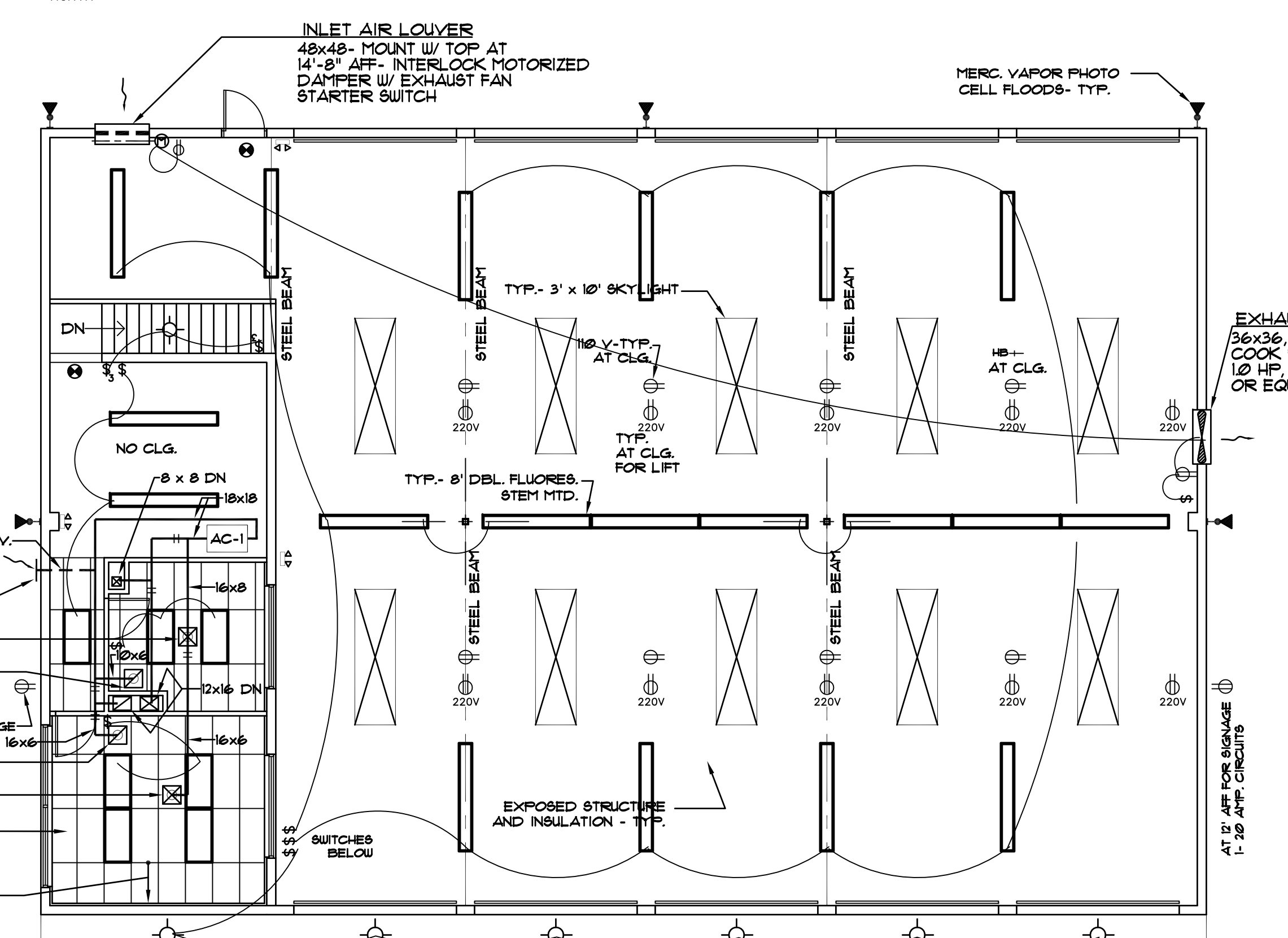
**DOOR TYPES:**

TYPE A: ALUM. & GLASS STOREFRONT  
 TYPE B: FLUSH WOOD  
 TYPE C: HOLLOW METAL FULL LOUVERED  
 TYPE D: O.H. ROLL UP ALUM/STL/GLASS  
 TYPE E: O.H. ROLL UP ALUM/STL  
 TYPE F: FLUSH WOOD W/ PASS WINDOW

**NOTES:**  
 1. PROVIDE COMPLETE WEATHERSTRIPPING AT ALL EXTERIOR DOORS  
 2. COORDINATE LOCKS AND KEYING REQUIREMENTS WITH OWNER.  
 3. REFER TO MECHANICAL DRAWINGS FOR DOORS REQUIRED TO BE UNDERCUT  
 4. ALL DOORS IN THE MEANS OF EGRESS WILL BE OPERABLE FROM THE INSIDE WITHOUT SPECIAL KEYS, EFFORT, OR KNOWLEDGE.



**FIRST FLOOR CEILING PLAN**  
 1/8" = 1'-0"



**UPPER CEILING PLAN**  
 1/8" = 1'-0"



**ARCHINETICS**  
 ARCHITECTS / PLANNERS  
 1201 Seminole Blvd., Suite 200  
 Casselberry, Florida, 32707  
 Ph: 407-698-7799  
 Fax: 407-698-0834

**NEW RIKER'S AUTOMOTIVE SHOP**  
 ORANGE COUNTY, FL  
 For  
**Brent Riker**  
 955 S. Orange Ave  
 Orlando, Florida

**PARTITION TYPES**

WOOD STUDS AT 16" O.C.  
 W/ 5/8" GYP. BD. ON EACH SIDE  
 W/ R-11 BATT INSULATION IN WALLS  
 ADJACENT TO UNCONDITIONED SPACES.

1/2" GYP. BD. ON 1x2 FT WOOD FLOORING  
 W/ 3/4" INSULATION ON CMU WALL

8" CMU WALL - PNT. FINISH

Project No: 95-214 Appr. By: RLB  
 Drawn By: RLB Date: 01/25/95  
 Checked By: RLB Scale: NOTED

**FLOOR PLAN CEILING PLAN**

Sheet No:

**A-2**

