



**DESIGN / BUILD
 TENANT- BUILD-OUT
 ONE SENIOR PLACE**
 AT:
 715 Douglas Ave.
 Altamonte Springs, Florida
 BY:
 HW DAVIS CONSTRUCTION

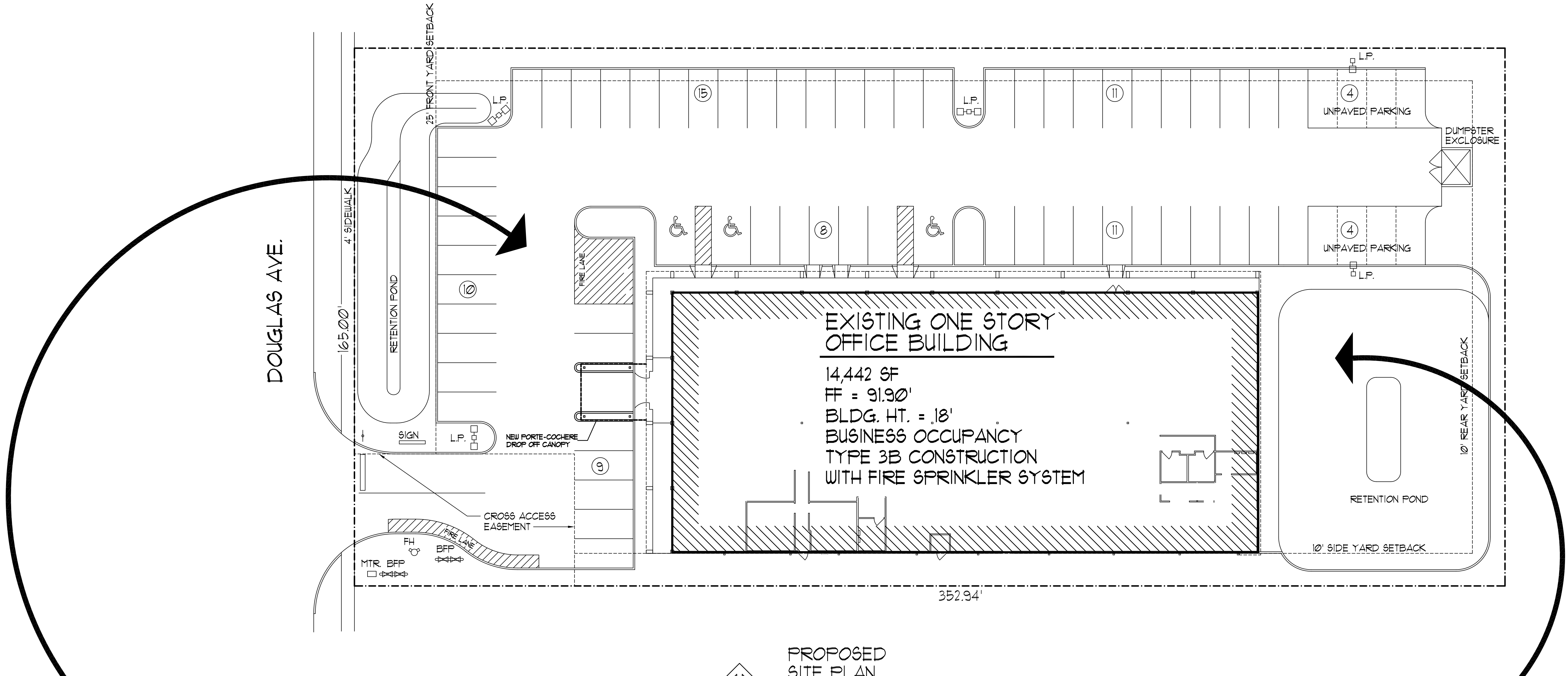
General Notes

Mark Date Revision

Project No: 11-3111 Appov.By: RLB
 Drawn By: RLB Date: 7/13/11
 Checked By: RLB Scale: NOTED

**PROPOSED
 SITE PLAN**

Sheet No:



**PROPOSED
 SITE PLAN**
 SCALE: 1/16" = 1'-0"



FRONT PERSPECTIVE VIEW



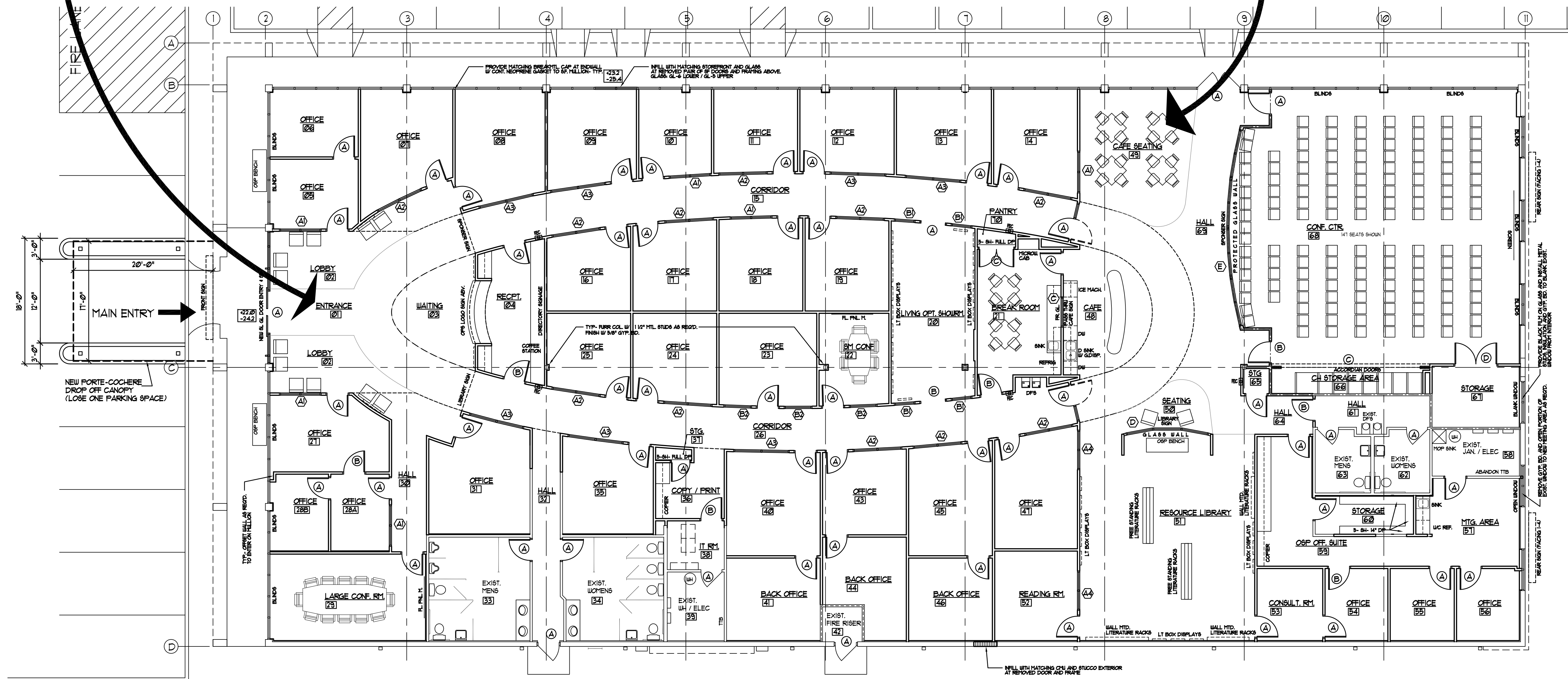
REAR PERSPECTIVE VIEW FROM 1-4



FINAL INTERIOR ENTRY



INTERIOR PERSPECTIVE VIEW



FLOOR PLAN
SCALE: 1/8" = 1'-0"

General Notes

Mark Date Revision

Project No: II-3711 Appov:By: RLB
Drawn By: RLB Date: 1/13/11
Checked By: RLB Scale: NOTED

FLOOR PLAN

Sheet No:

A-5

of