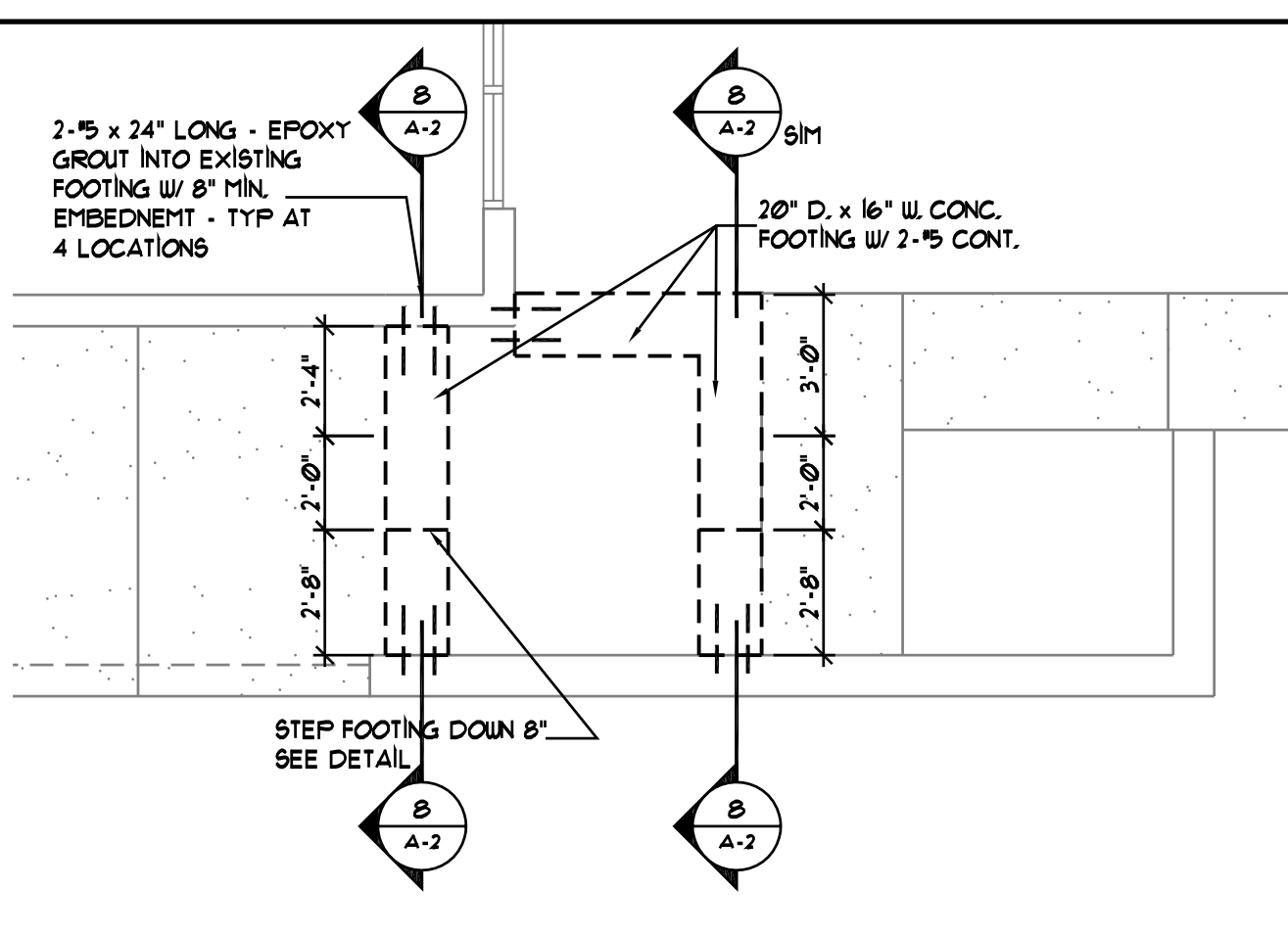
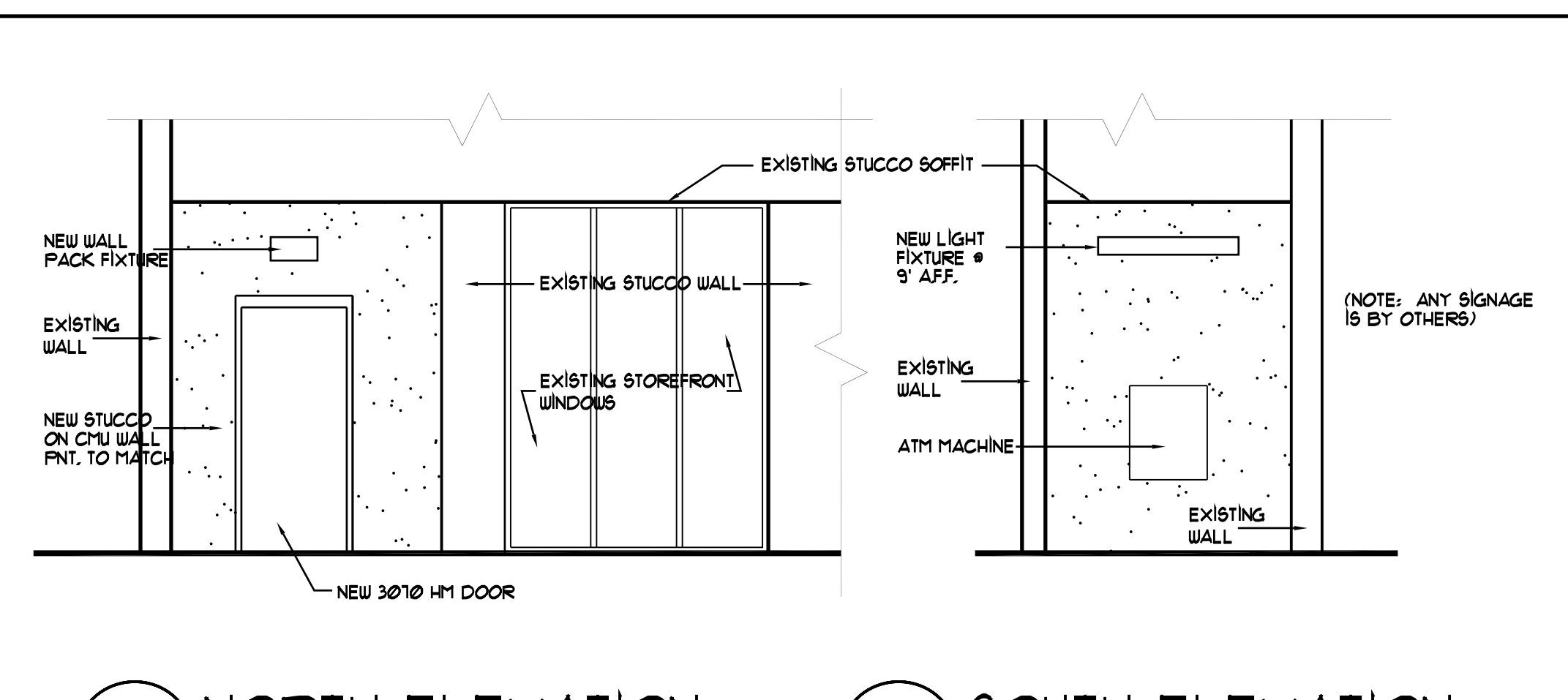


**1 DEMOLITION PLAN**  
 1/8" = 1'-0"

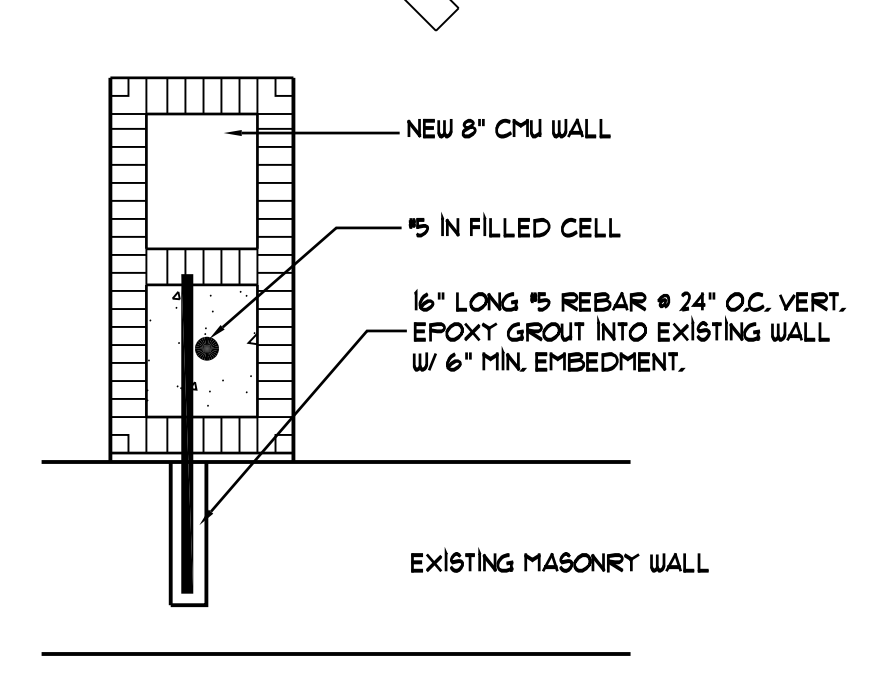


**2 FOUNDATION PLAN**  
 1/4" = 1'-0"

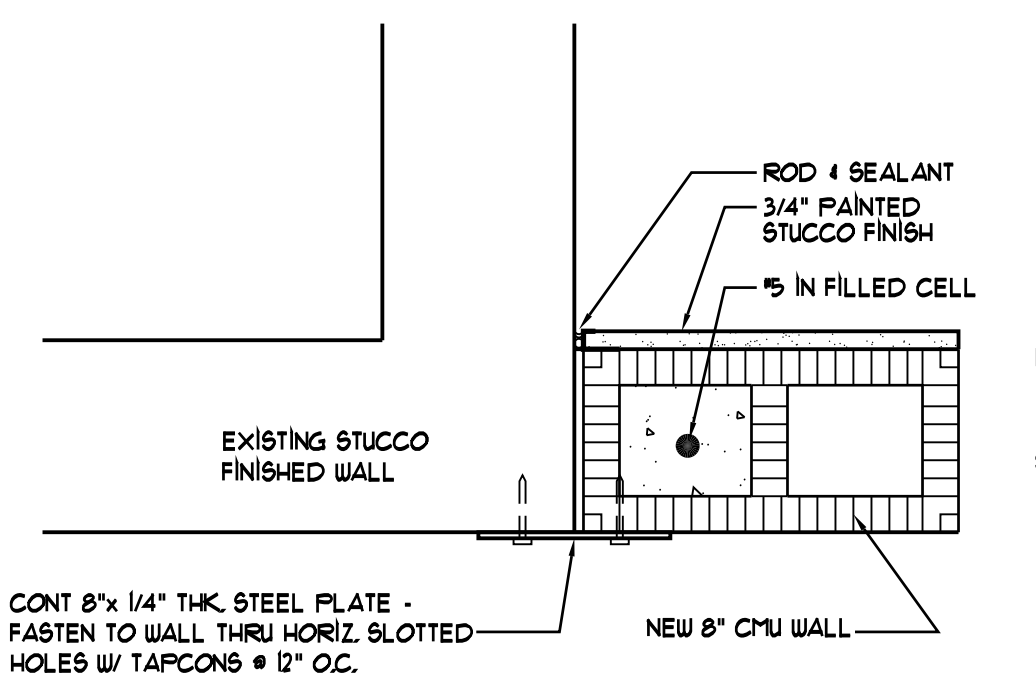


**3 NORTH ELEVATION**  
 1/4" = 1'-0"

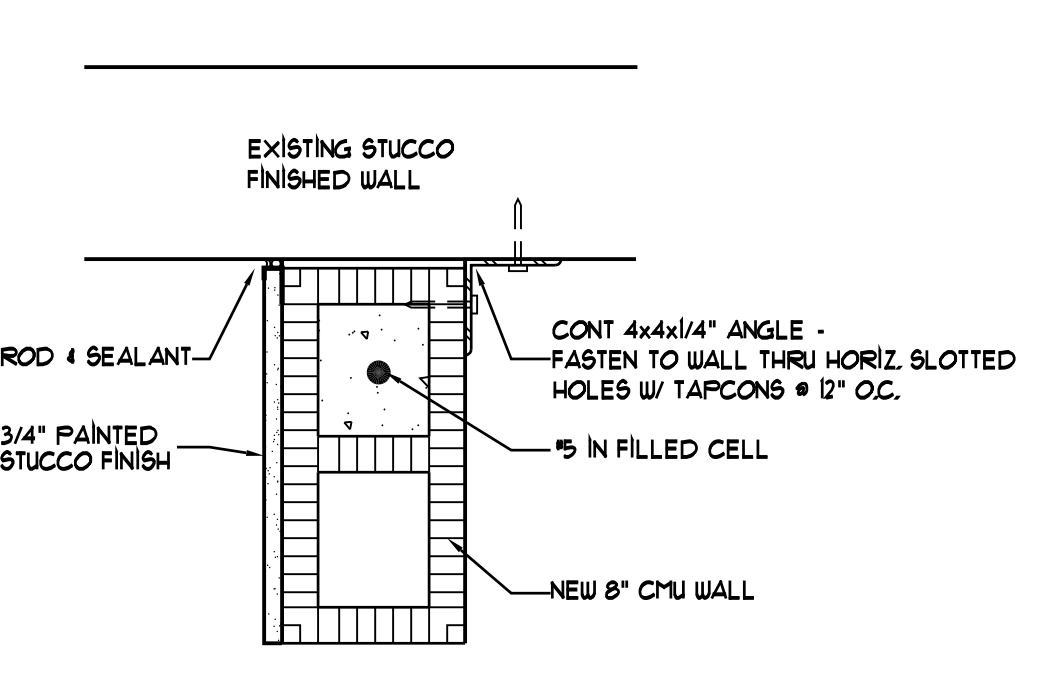
**4 SOUTH ELEVATION**  
 1/4" = 1'-0"



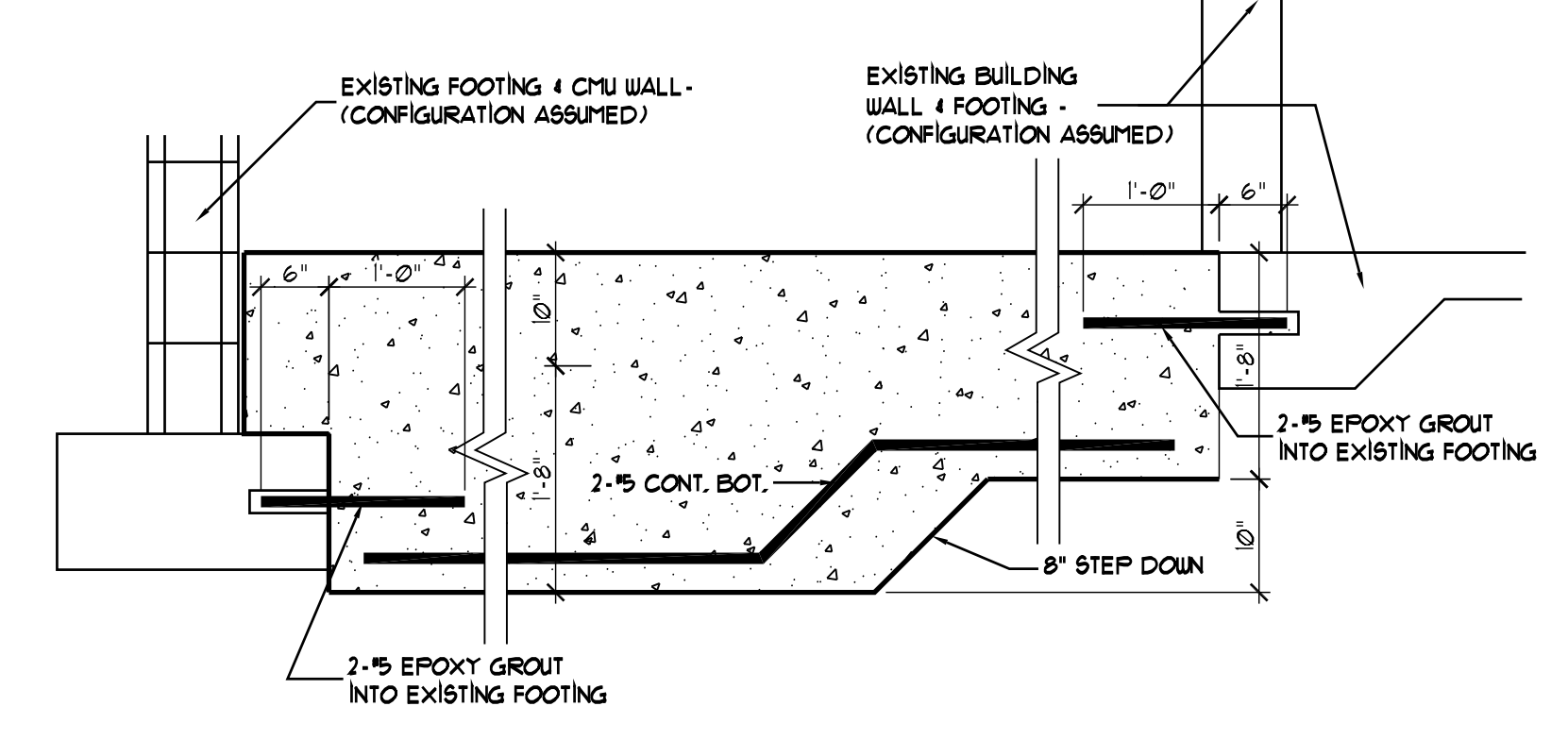
**5 DETAIL**  
 1 1/2" = 1'-0"



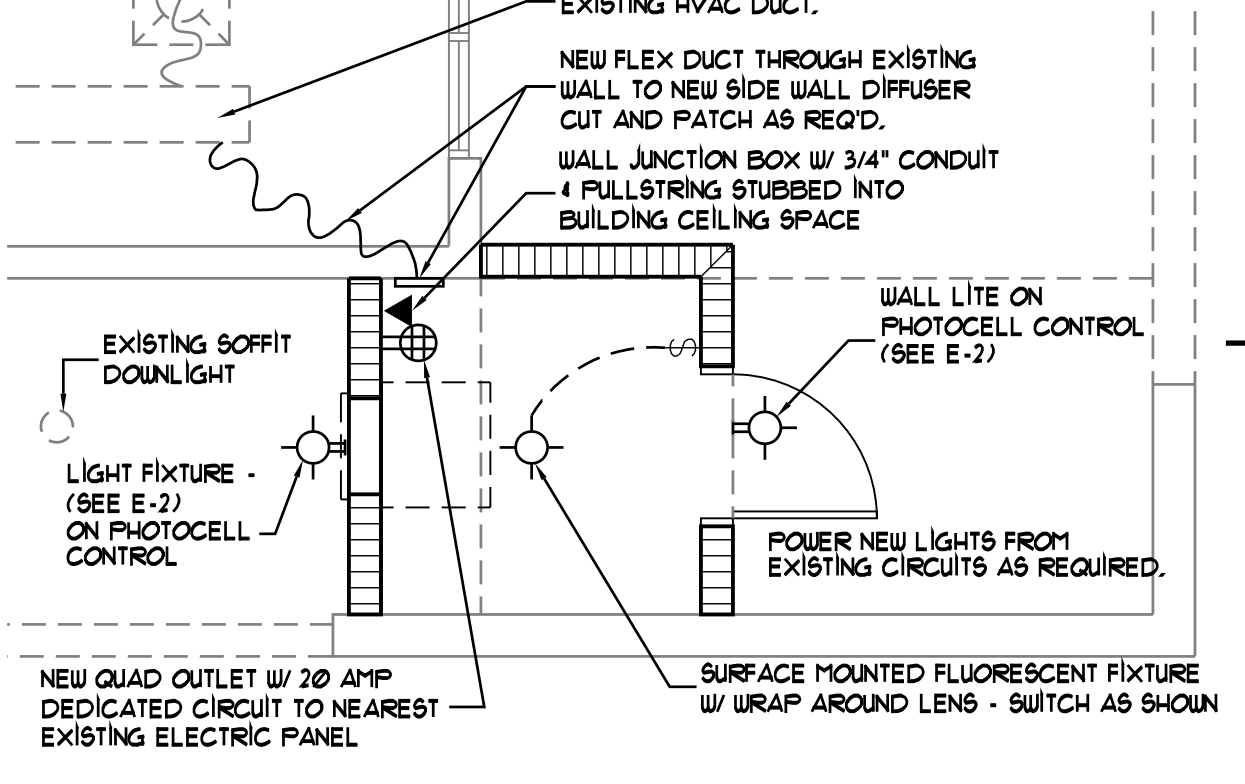
**6 DETAIL**  
 1 1/2" = 1'-0"



**7 DETAIL**  
 1 1/2" = 1'-0"

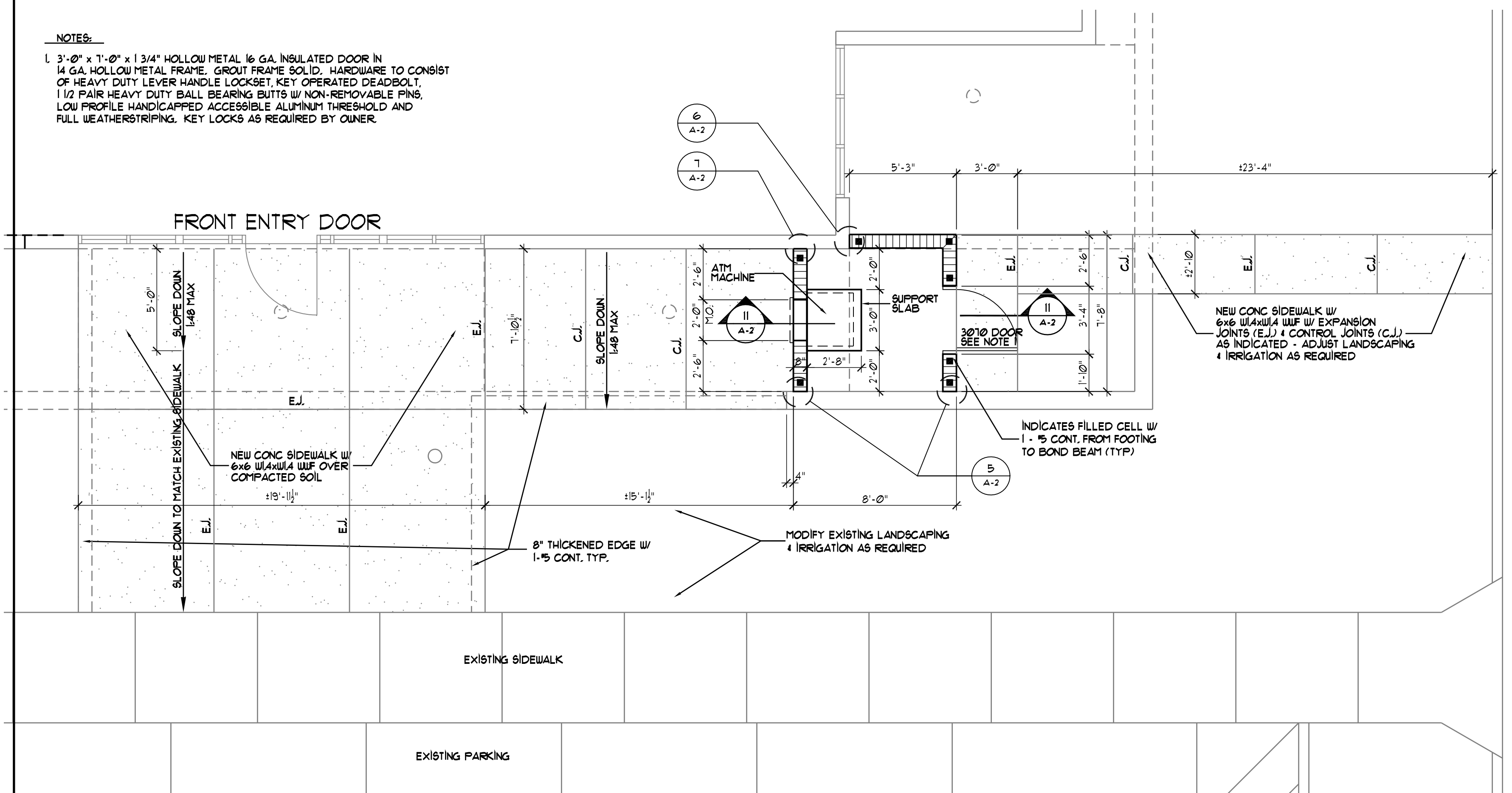


**8 SECTION**  
 3/4" = 1'-0"

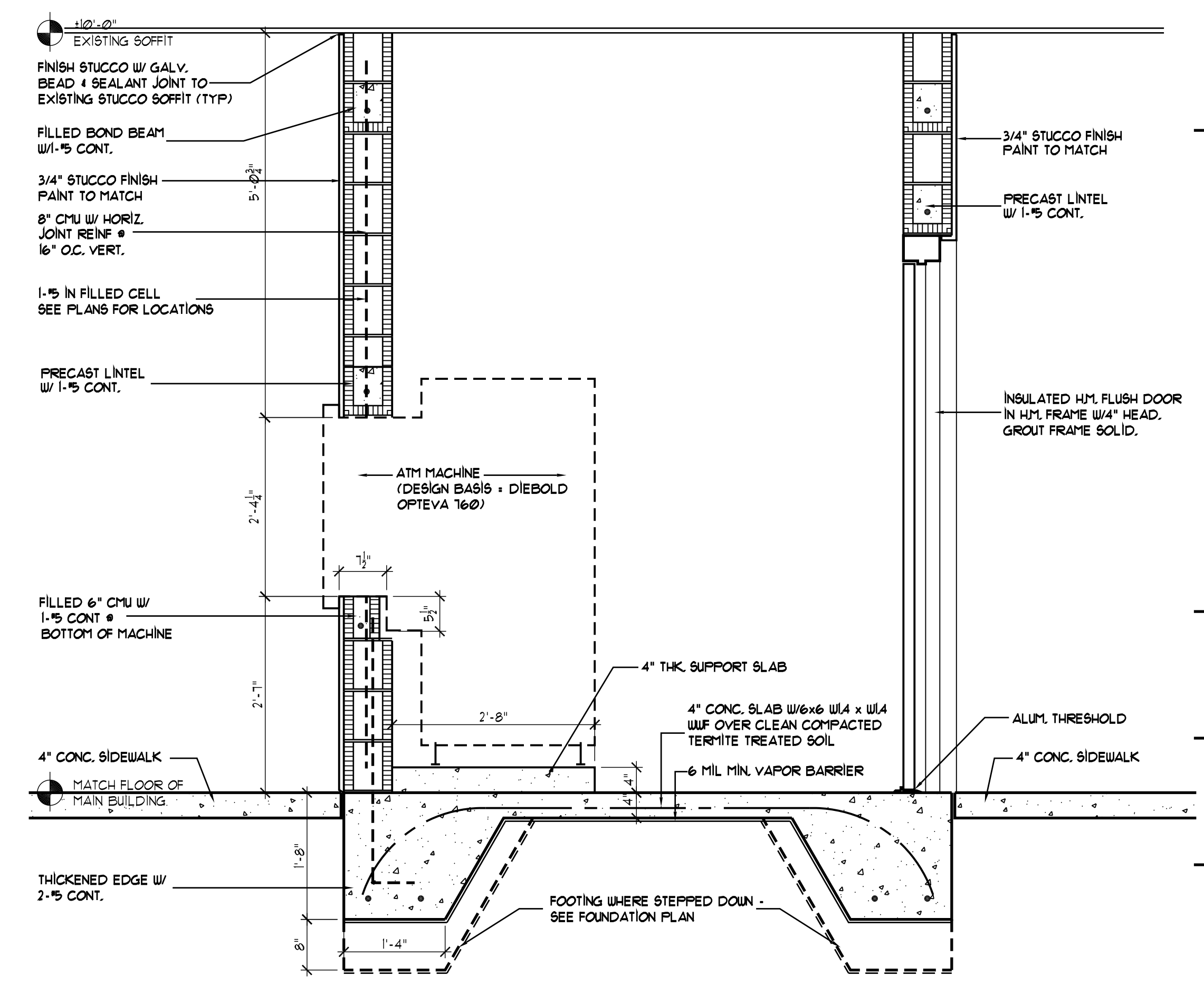


**9 ELECT/MECH PLAN**  
 1/4" = 1'-0"

**NOTES:**  
 1. 3'-0" x 7'-0" x 1'-0" x 1/4" HOLLOW METAL 16 GA. INSULATED DOOR IN 14 GA. HOLLOW METAL FRAME. GROUT FRAME SOLID. HARDWARE TO CONSIST OF HEAVY DUTY LEVER HANDLE LOCKSET, KEY OPERATED DEADBOLT, 1 1/2" PAIR HEAVY DUTY BALL BEARING BUTTS W/ NON-REMOVABLE PINS, LOW PROFILE HANDICAPPED ACCESSIBLE ALUMINUM THRESHOLD AND FULL WEATHERSTRIPPING. KEY LOCKS AS REQUIRED BY OWNER.



**10 OVERALL FLOOR PLAN**  
 1/4" = 1'-0"



**11 SECTION**  
 3/4" = 1'-0"

**ATM ADDITION**  
**COLONIAL BANK**  
**CASSELBERRY BRANCH**  
 FOR:  
**COLONIAL BANK, N.A.**  
 2127 W. STATE ROAD 434  
 LONGWOOD, FL 32779

General Notes

Mark Date Revision

Project No: 3470 Approv. By: RLB  
 Drawn By: RIM Date: 5/24/04  
 Checked By: RLB Scale: AS NOTED

**PLANS & ELEVATIONS**  
**SECTION & DETAILS**

Sheet No:

**A-2**