

**RENOVATIONS**  
**CENTRAL FLORIDA COMMUNITY SCHOOL**  
 2220 Hempel Ave.  
 Winter Garden, FL

General Notes

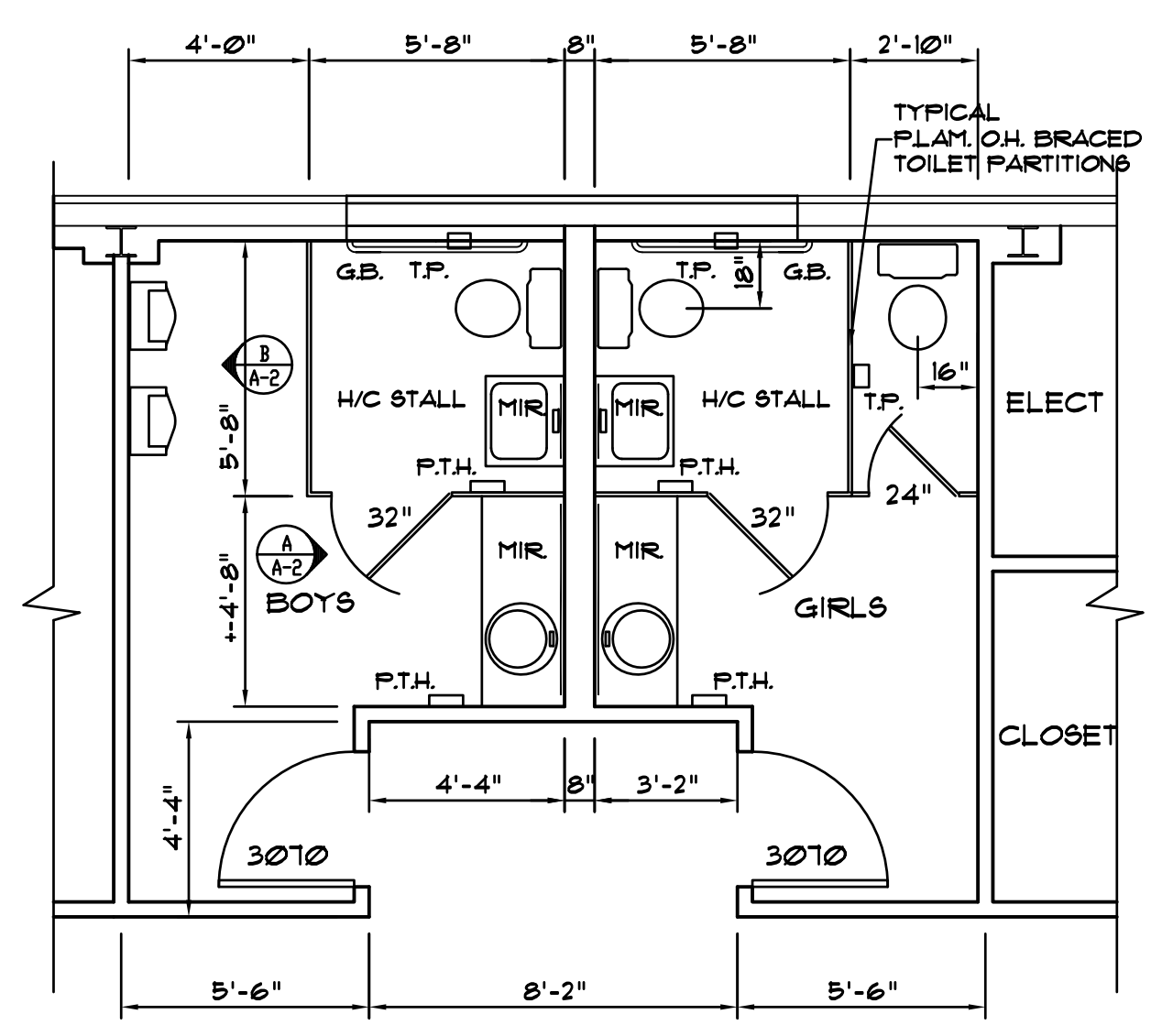
Mark Date Revision

Project No: 92-231 Appov.By: RLB  
 Drawn By: MC / RLB Date: 5/28/92  
 Checked By: RLB Scale: NOTED

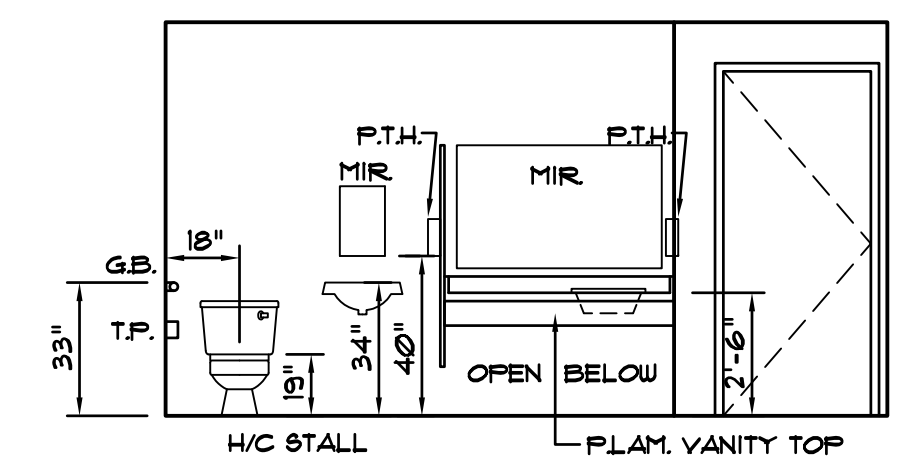
**FLOOR PLAN & CEILING PLAN**

Sheet No:

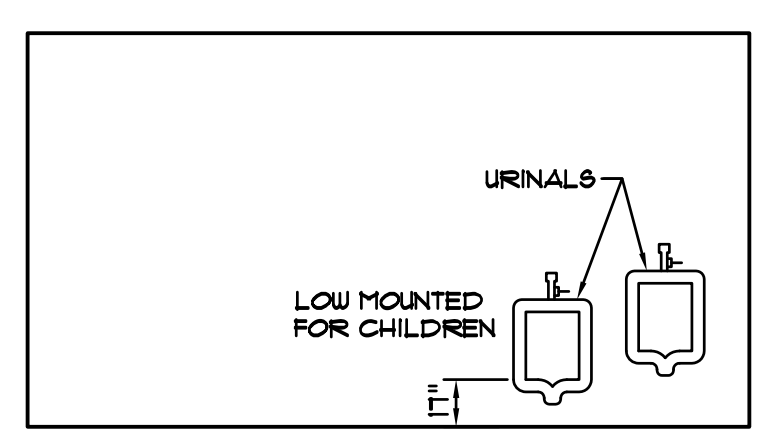
**A-2**



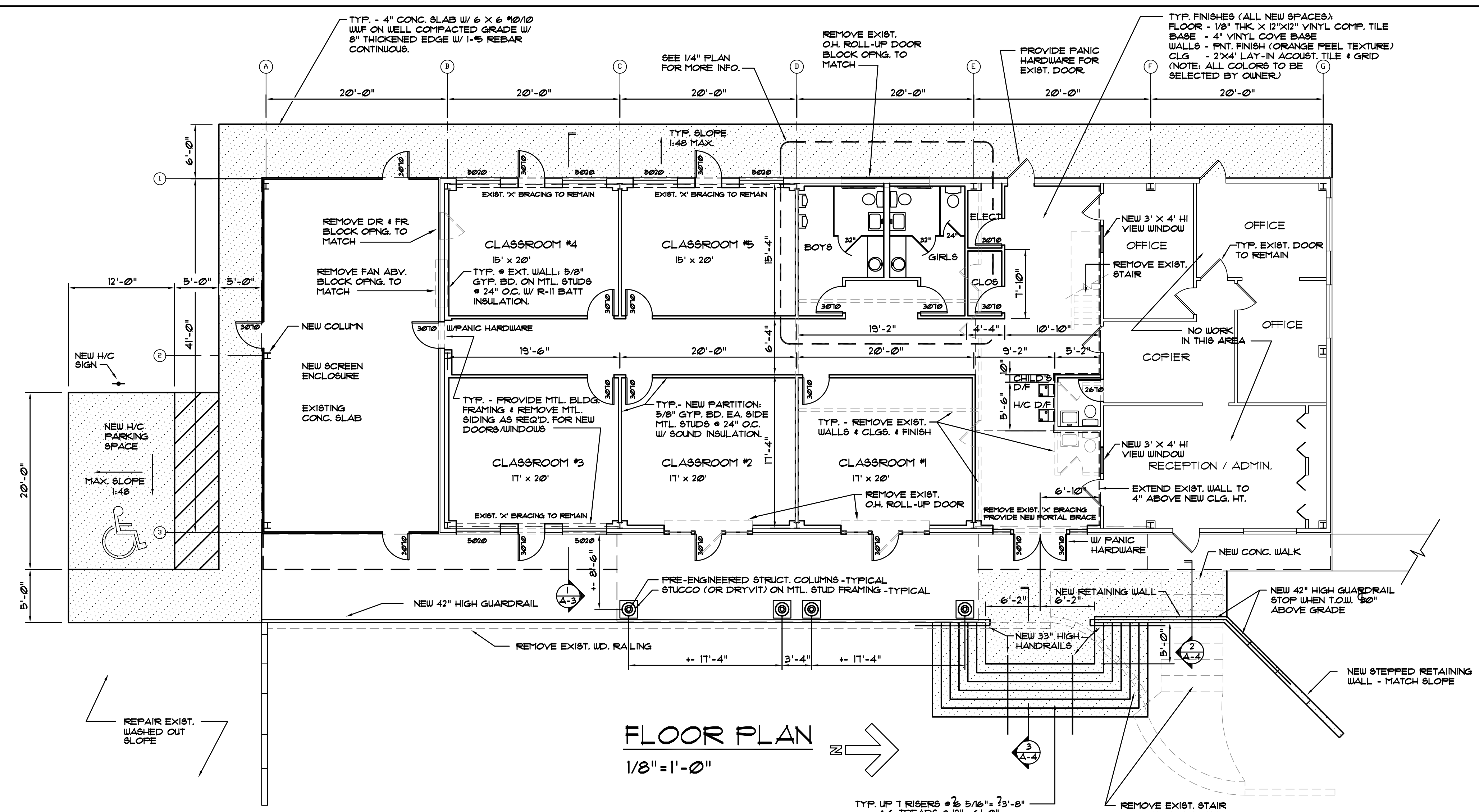
**PARTIAL FLOOR PLAN**  
 1/4" = 1'-0"



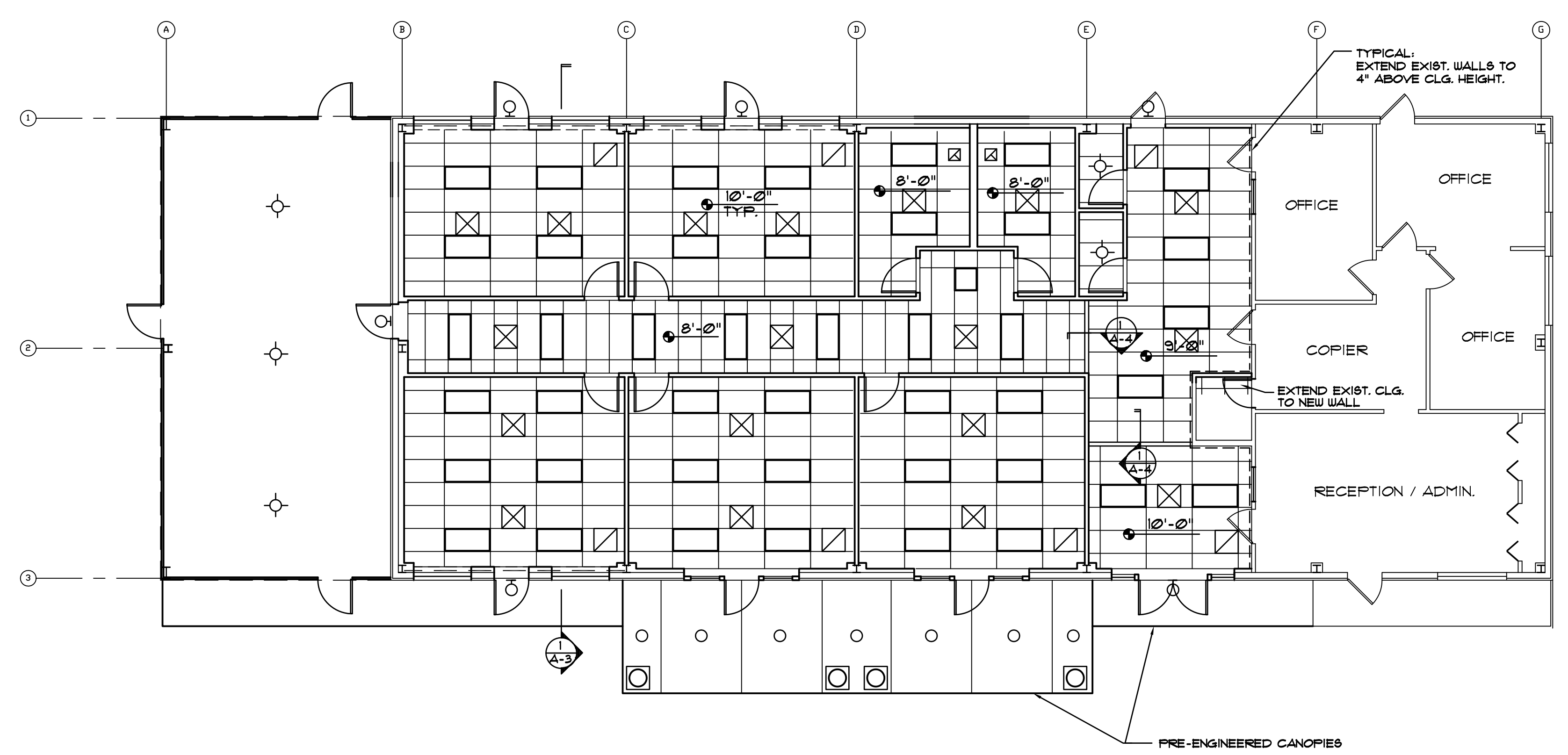
NEW BOYS BATHROOM (GIRLS SIMILAR)  
**A INTERIOR ELEVATION**  
 A-2 1/4" = 1'-0"



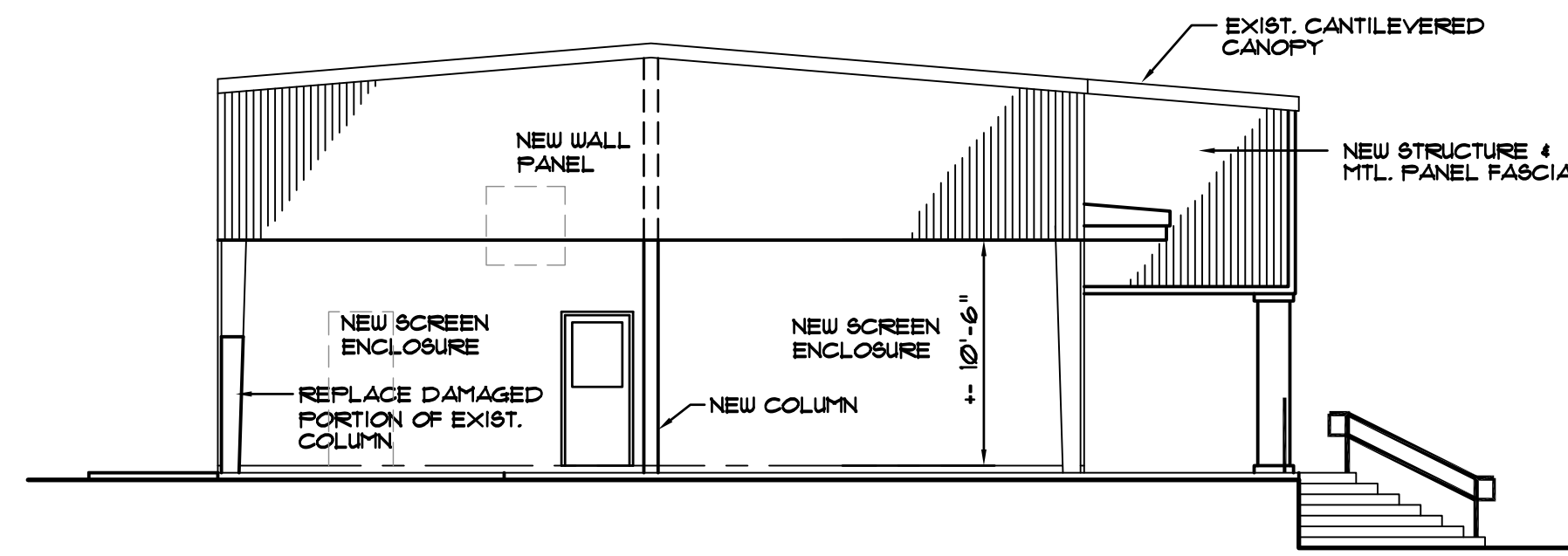
**B INTERIOR ELEVATION**  
 A-2 1/4" = 1'-0"



**FLOOR PLAN**  
 1/8" = 1'-0"

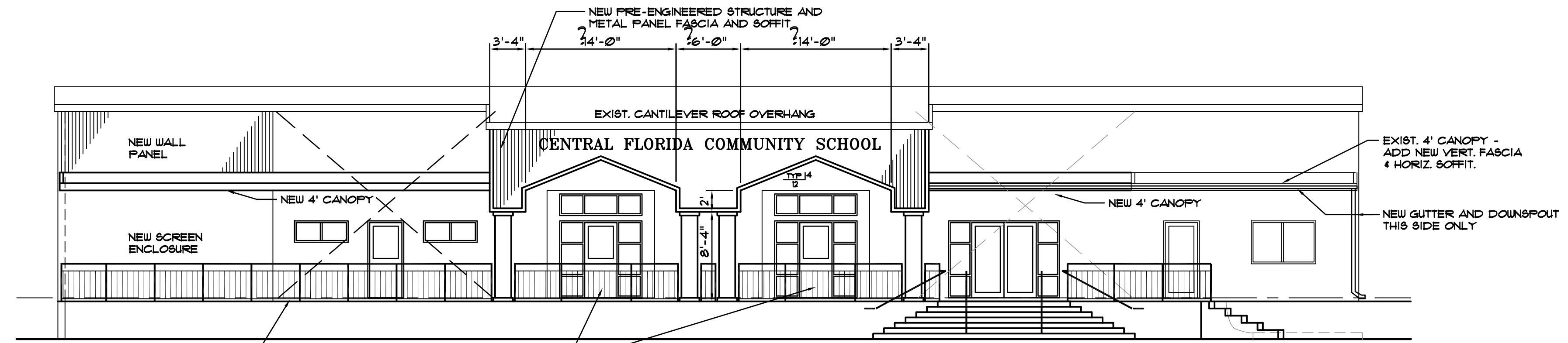


**REFLECTED CEILING PLAN**  
 1/8" = 1'-0"



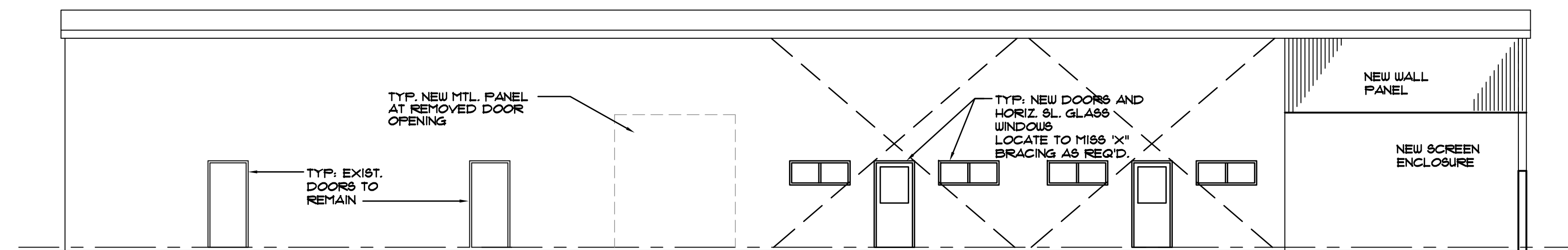
**LEFT ELEVATION**

1/8" = 1'-0"



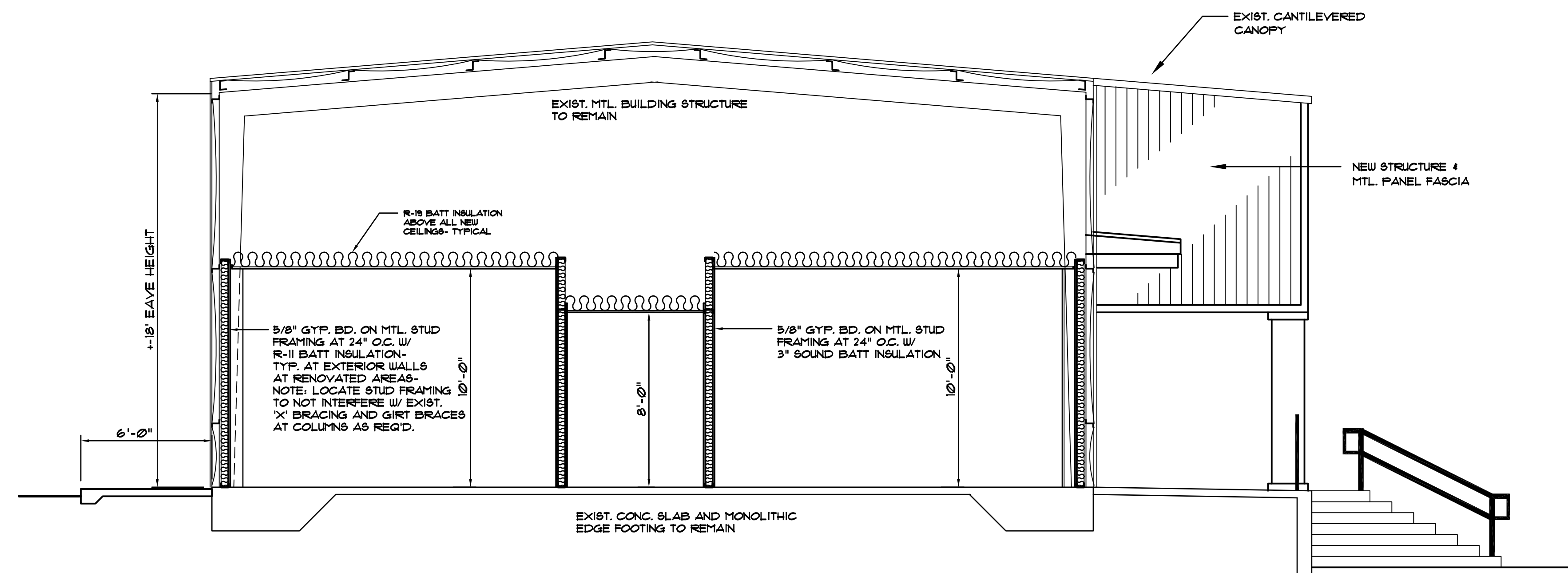
**FRONT ELEVATION**

1/8" = 1'-0"



**REAR ELEVATION**

1/8" = 1'-0"



**BUILDING SECTION**

1/4" = 1'-0"

General Notes

Mark Date Revision

**RENOVATIONS**  
**CENTRAL FLORIDA COMMUNITY SCHOOL**  
 2220 Hempel Ave.  
 Winter Garden, FL

Project No: 92-231 Approv. By: RLB  
 Drawn By: MC / RLB Date: 5/28/92  
 Checked By: RLB Scale: NOTED

**ELEVATIONS & SECTION**

Sheet No:

**A-3**

3 of 7