

BRIANTO'S ORIGINAL HOAGIES
 INTERIOR BUILD-OUT SUITE B
 12001 Avalon Lake Dr.
 Orlando, FL 32828
 FOR:
 SEACAP, INC.
 Orlando, FL

General Note

1/23/07 DWT. ADDED PERMIT COMMENTS
 1
 Date Revision

Project No: 36001 Appov. By: RLB
 Drawn By: RGN Date: 1/23/07
 Checked By: RLB Scale: NOTED

FLOOR PLAN & SCHEDULES

Sheet No.

A-2

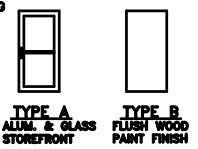
DOOR & WINDOW SCHEDULE											
NO	WIDTH	HEIGHT	THK	TYPE	MAT'L	FINISH	HWYR SET	FIRE RATING	FRAME MAT'L	FRAME FINISH	NOTES
1	11'-0"	7'-0"	1-3/4"	A (EXT'G)	EXT'G	EXT'G	EXT'G	---	EXT'G	EXT'G	EXISTING ALUM/GLASS STOREFRONT DOOR
2	3'-0"	8'-0"	1-3/4"	B (EXT'G)	EXT'G	EXT'G	EXT'G	---	EXT'G	PNT	EXISTING HM DOOR
3	3'-0"	7'-0"	1-3/4"	B	SCWD	PNT	2	---	HM	PNT	
4	3'-0"	7'-0"	1-3/4"	B	SCWD	PNT	2	---	HM	PNT	
5	3'-0"	7'-0"	1-3/4"	B	SCWD	PNT	2	---	HM	PNT	
6	3'-0"	7'-0"	1-3/4"	B	SCWD	PNT	2	---	HM	PNT	

ABBREVIATIONS:
 EXST. = EXISTING
 PNT = PAINT FINISH
 PLAM = PLASTIC LAMINATE
 HM = HOLLOW METAL
 SCWD = SOLID CORE WOOD DOOR

1. COORDINATE LOCKS AND KEYING REQUIREMENTS WITH OWNER.
 2. REFER TO MECHANICAL DRAWINGS FOR DOORS REQUIRED TO BE UNDERCUT.
 3. ALL DOORS IN THE MEANS OF EGRESS WILL BE OPERABLE FROM THE INSIDE WITHOUT SPECIAL KEYS, EFFORT, OR KNOWLEDGE.

HARDWARE SETS:
 SET #1: EA. DOOR TO HAVE: KEYED CYLINDER W/ THUMBTURN INSIDE OVERHEAD CLOSER
 PUSH BAR, FULL WIDTH
 PULL HANDLE - H/C ACCESSIBLE
 BB BUTTS, 1.5 PR.
 ALUM. THRESHOLD, LOW PROFILE (PEMCO 270A)
 WEATHERSTRIPPING

SET #2: EA. DOOR TO HAVE: LOCKSET- LEVER HANDLE (PRIVACY FUNCTION @ TLTS) (OFFICE FUNCTION AT REMAINDER)
 BUTTS- 1.5 PR. - SPRING CLOSING OVERHEAD OR FLOOR STOP (USE FLOOR STOP ONLY IF NOT A TRIPPING HAZARD)

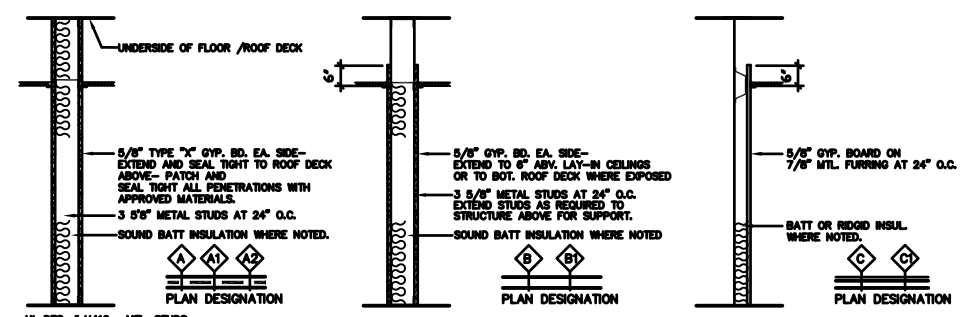
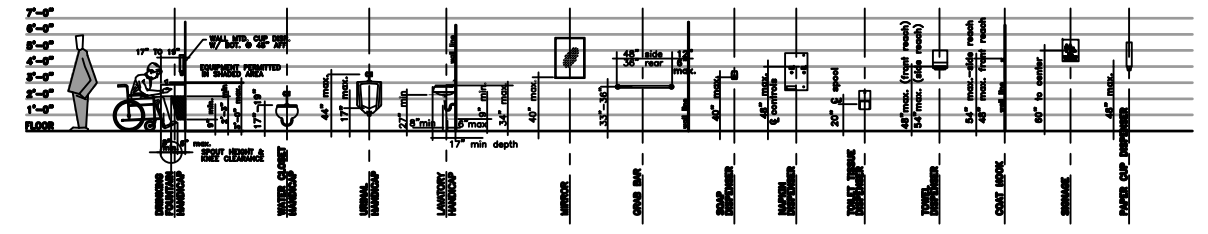


DOOR TYPES

HARDWARE NOTES:
 1. ALL LOCKSETS TO BE LEVER HANDLED.
 2. SET EXTERIOR DOOR CLOSERS FOR 8.5 LBS. MAX. PULL EFFORT.
 3. SET INTERIOR DOOR CLOSERS FOR 8.5 LBS. MAX. PULL EFFORT.
 4. ALL HARDWARE TO COMPLY WITH ADA AND FLORIDA ACCESSIBILITY CODES.

TOILET ACCESSORY SCHEDULE			
MARK	BRADLEY	DESCRIPTION	MOUNTING HEIGHT
A	BRADLEY 5104	TOILET TISSUE DISPENSER-1 ROLL SEMI-RECESSED	20" A.F.F. TO CENTERLINE OF SPOOL
B	BRADLEY 781	24" W. x 36" H. MIRROR	40" TO BOTTOM OF REFLECTIVE SURFACE
C	BRADLEY 8122-002 X 48	48" LONG GRAB BAR	36" A.F.F. TO CENTERLINE
D	BRADLEY 8122-001 X 36	36" LONG GRAB BAR	36" A.F.F. TO CENTERLINE
E	BRADLEY 2252-10	SEMI-RECESSED TOWEL DISPENSER / WASTE RECEPTACLE	48" MAX. TO TOWEL OPENING
F	TRUBRO LAY-GUARD	LIQUID SOAP DISPENSER	40" MAX. TO PUSH BUTTON
H1	BRADLEY 01-MEN'S BRADLEY 02-WOMEN'S (1/2" BRONZ PLASTIC)	MALE / FEMALE H/C RESTROOM SIGN	60" TO CENTERLINE

FIXTURE MOUNTING & TOILET ACCESSORIES

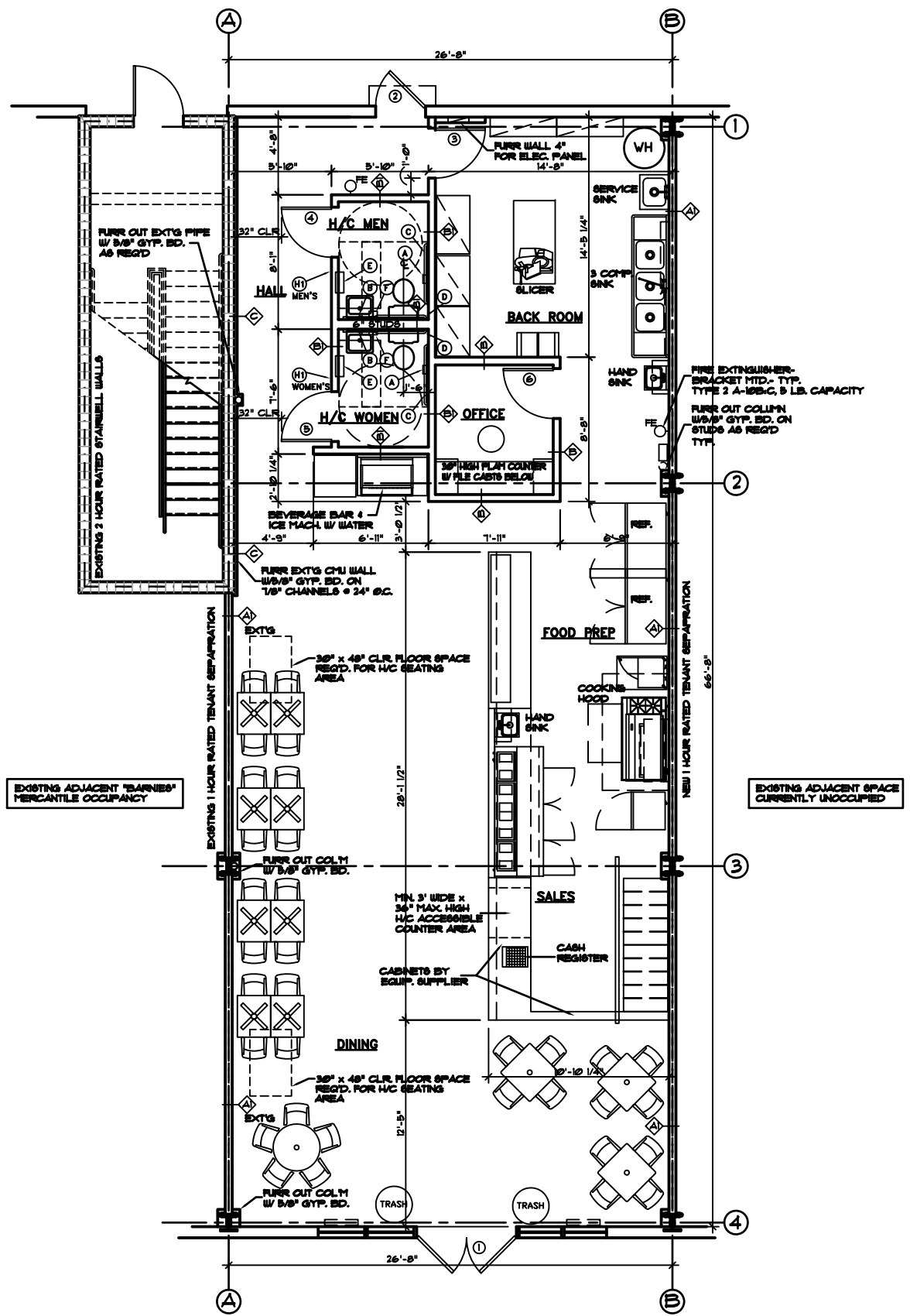


PARTITION TYPES
 TYPE A - 1-HR. PARTITION
 TYPE A1 - SIMILAR TO ABOVE W/ SOUND BATT INSULATION
 TYPE A2- SIM. TO ABOVE EXCEPT NON-RATED, INSULATED
 TYPE A3- SIM. TO ABOVE EXCEPT NON-RATED, UNINSULATED.

TYPE B - TYP. INTERIOR PARTITION
 TYPE B1 - SIMILAR TO ABOVE W/ SOUND BATT INSULATION

TYPE C - FURRED PARTITION
 TYPE C1 - SIMILAR TO ABOVE W/ INSULATION NOTED.

NOTE: FINISH FLOOR SLAB TO BOTTOM OF METAL DECK ABOVE IS APPROXIMATELY 16'-2"



FLOOR PLAN
 SCALE: 1/4" = 1'-0"